



Doctors, Services & Locations

inspira HEALTH MEDICAL GROUP

Primary Care

Almonesson

- Linda Aquilino, DO
- Nancy Koshy, DO

1652 Cooper Street
Deptford, NJ 08096
P: (856) 227-8611 | F: (856) 227-5716

Buena Vista

- Douglas Hargrave, DO
- Paul Peterson, DO
- John Pirolli, DO
- Mavola Tench, MD

761 S. Harding Highway
Buena, NJ 08310
P: (856) 697-0111 | F: (856) 697-0003

Centerton

- Jay Malickel, DO

798 Centerton Road
Pittsgrove, NJ 08318
P: (856) 358-6161 | F: (856) 358-0142

Clarksboro

- William Brennan, DO
- Thomas McAndrew, MD
- Erica Milas, DO
- Kimberly McGuinness, APN

121 Berkley Road
Clarksboro, NJ 08020
P: (856) 284-6500 | F: (856) 497-5202

Glassboro

- DUR-E-Shahwaar Sayed, DO
- Steven Meskin, MD
- Joseph B. Szgalsky, MD
- Pinal Patel, PA
- Courtney Turk, PA

200 Rowan Boulevard
Glassboro, NJ 08028
P: (856) 582-0500 | F: (856) 582-0163

Haddon Township

- Victor Ukwu, MD
- Jennifer Naticchia, MD

400 W. Cuthbert Boulevard
Haddon Twp., NJ 08108
P: (856) 559-4277 | F: (856) 497-5204

Laurel Springs

- Arthur Schultes, DO
- Anhthu Pickart, PA

1238 Chews Landing Road
Clementon, NJ 08021
P: (856) 545-9560 | F: (856) 497-5214

Mantua

- Craig Bober, DO
- Sarah Davis, MD
- Suzanne VanDerwerken, MD

660 Woodbury-Glassboro Road, Suite 26
Sewell, NJ 08080
P: (856) 589-3708 | F: (856) 589-2662

Millville

- Dave Aderholdt, DO
- Rebecca Fraid, DO
- Ashley Odukoya, DO
- Nicole Zucconi, DO
- Samantha Aderholdt, PA-C

3 Elizabeth Avenue
Millville, NJ 08332
P: (856) 641-6272 | F: (856) 327-6588

Mullica Hill Commons

- Gregory E. Herman, MD
- Maria Kent, MD
- Bac Nguyen, MD
- Kristen Trom, DO
- Janeen Burns, APN

155 Bridgeton Pike, Suite A
Mullica Hill, NJ 08062
P: (856) 223-0500 | F: (856) 223-1098

Sicklerville

- Ravi Desai, DO
- Maynard Holgado, MD
- Tara Wyche-Bullock, MD

485 Williamstown Road
Sicklerville, NJ 08081
P: (856) 237-8100 | F: (856) 237-8042

Somerdale

- Victor Ukwu, MD
- Jennifer Naticchia, MD

1 South Whitehorse Pike
Somerdale, NJ 08083
P: (856) 545-9620 | F: (856) 575-5156

Tomlin Station

- Edward Pirolli, DO
- Gregory Stiefel, DO

201 Tomlin Station Road, Suite D
Mullica Hill, NJ 08062
P: (856) 241-2522 | F: (856) 241-2511

Washington Township

372 Egg Harbor Road, Suite 4A
Sewell, NJ 08080
P: (856) 218-5899 | F: (856) 497-5207

Williamstown

364 Berlin Cross Keys Road
Williamstown, NJ 08094
P: (856) 885-2550 | F: (856) 497-5297

Woolwich

- William Bennett, DO
- Jason Lotkowsky, DO

40 Village Green Drive,
Woolwich Twp., NJ 08085
P: (856) 467-7360 | F: (856) 467-5959

Specialty Services

Cardiology

- Enakshi Bajpai, DO
- M. Scott Dawson, MD
- Kurt W. Kaulback, MD
- Thomas F. Moccia, DO
- Farooq A. Padder, MD
- Ali Unwala, MD
- John A. Vergari, MD
- Kathleen M. Curtis, DNP, FNP, APN-C
- Miladys Delgado, APN-C
- Marcia Skowron-Scharle, APN-C

Mullica Hill

698 Mullica Hill Road, 3rd Floor
Mullica Hill, NJ 08062
P: (856) 508-3707 | F: (856) 221-4077

Cardiovascular Diagnostic Center

636 Kings Highway, Suite C
Woodbury, NJ 08096
P: (856) 845-9666 | F: (856) 845-5666

Endocrinology

Mullica Hill

- Jodi Fox-Mellul, MD
 - Amy Scanlon, APN
- 155 Bridgeton Pike, Suite B
Mullica Hill, NJ 08062
P: (856) 223-0965 | F: (856) 223-1044

Sicklerville

- Jenine Vecchio, MD
- 485 Williamstown Road
Sicklerville, NJ 08081
P: (856) 885-2790 | F: (856) 237-8042

Gastroenterology

Vineland

- Jennifer Copare, DO
 - David Shields, MD
 - John Bartholomew, APN
 - Catherine Singiser, APN
- 2950 College Drive, Suite 2G
Vineland, NJ 08360
P: (856) 691-1129 | F: (856) 691-1229

Medical Oncology

Mullica Hill

- Erev Tubb, MD
 - Meghan Clark, APN
- 698 Mullica Hill Road, 3rd Floor
Mullica Hill, NJ 08062
P: (856) 508-3575 | F: (856) 221-4101

Neurology

Mullica Hill

- Susan Lotkowski, DO
- 155 Bridgeton Pike, Suite C
Mullica Hill, NJ 08062
P: (856)994-0005 | Fax: (856)221-4096

Pulmonary

Woodbury

- Gregory Breen, MD
 - Ho-Kan Cheng, MD
 - Eric Finkenstadt, MD
 - Theodore Plush, DO
 - Scott Rosenberg, MD
 - Amy Egan, APN
 - Michelle Lanza, APN
 - Ashley Hoffman, APN
- 17 West Red Bank Avenue, Suite 104
Woodbury, NJ 08096
P: (856) 853-2025 | F: (856) 845-8024

Mullica Hill

- Gregory Breen, MD
 - Ho-Kan Cheng, MD
 - Theodore Plush, DO
- 698 Mullica Hill Road, 3rd Floor
Mullica Hill, NJ 08062
P: (856) 853-2025 | F: (856) 845-8024

Vineland

- David Visco, MD
- 2950 College Drive, Suite 2F
Vineland, NJ 08360
P: (856) 213-9733 | F: (856) 575-5080

Radiation Oncology

Mullica Hill

- David Lowther, MD
- 698 Mullica Hill Road, 1st Floor
Mullica Hill, NJ 08062
P: (856) 508-3550 | F: (856) 221-4198

Women's Services

Gentle Beginnings Midwifery

Elmer

- Lindsay Dauphinee, CNM
 - Bernadette Lloyd-Sobolow, CNM
 - Waverly Lutz, CNM
 - Alexandra Wagner, CNM
 - Caitlin French, CNM
- 389 Harding Highway, Suite 1
Elmer, NJ 08318
P: (856) 358-1100 | F: (856) 358-3135

Haddon Heights

- Lindsay Dauphinee, CNM
 - Bernadette Lloyd-Sobolow, CNM
 - Alexandra Wagner, CNM
- 708 Station Avenue
Haddon Heights, NJ 08035
P: (856) 265-0200 | F: (856) 547-3531

Urogynecology

Mullica Hill

- Woojin Chong, MD
 - Heather Malia, PA
- 155 Bridgeton Pike, Suite C
Mullica Hill, NJ 08062

Vineland

- Woojin Chong, MD
 - Heather Malia, PA
- 2950 College Drive, Suite 2A
Vineland, NJ 08360
P: (856) 641-8680 | F: (856) 641-8679

Maternal/Fetal Medicine

Vineland

- Robert Debbs, DO
 - Cara Dolan, MD
 - Paula Edelson, MD
 - Samuel I. Parry, MD
 - Haley Quant, MD
 - Jourdan Triebwasser, MD
- 1505 W. Sherman Avenue
Vineland, NJ 08360
P: (856) 641-7960 | F: (856) 641-7645

Mullica Hill

- Robert Debbs, DO
 - Dominic Marchiano, MD
 - Eileen Wang, MD
- 698 Mullica Hill Road, 2nd Floor
Mullica Hill, NJ 08062
P: (856) 508-3625 | F: (856) 221-4213

Obstetrics and Gynecology

East Vineland

- Neely Elisha, DO
 - Sabrina Thomas, MD
- 2466 East Chestnut Ave, Bldg 2
Vineland, NJ 08360
P: (856) 213-9500 | F: (856) 221-4099

Elmer

- Michael Geria, DO
 - Cathy Geria, APN-C
- 525 S. State Street, Suite 5
Elmer, NJ 08318
P: (856) 363-1210 | F: (856) 363-1211

Mullica Hill

- Veronika Kinashuk, MD
 - Samantha DeLuca, DO
 - Azieb Lofton, DO
 - Melissa Suarez, DO
 - Patricia Ragone, CNM
 - Susan Gominger, APN-C
 - Caryn Vance, APN-C
 - MaryAnn D'Arrigo, APN
- 698 Mullica Hill Road, 2nd Floor
Mullica Hill, NJ 08062
P: (856) 845-4061 | F: (856) 384-1770

Vineland

- Benjamin DiJoseph, Jr., DO
 - Neely Elisha, DO
 - Michael Geria, DO
 - Sabrina Thomas, MD
- 2950 College Drive, Suite 2D
Vineland, NJ 08360
P: (856) 641-6313 | F: (856) 497-5350

Washington Township

- Samantha DeLuca, DO
 - Melissa Suarez, DO
- 372 Egg Harbor Road, Suite 4A
Sewell, NJ 08080
P: (856) 845-4061 | F: (856) 384-1170

West Deptford

- Veronika Kinashuk, MD
 - Samantha DeLuca, DO
 - Melissa Suarez, DO
 - Patricia Ragone, CNM
 - Susan Gominger, APN-C
 - Caryn Vance, APN-C
 - MaryAnn D'Arrigo, APN
- 800 Jessup Road, Suite 809
West Deptford, NJ 08066
P: (856) 845-4061 | F: (856) 384-1770

Surgical Services

Bariatric Surgery

Bridgeton

- Nauveed Iqbal, MD
- Mary Allison-Endicott, PA-C
- 10 Magnolia Avenue, Suite E
- Bridgeton, NJ 08302
- P: (856) 455-2399 | F: (856) 451-7791

Mullica Hill

- Keith Kreitz, MD
- 698 Mullica Hill Road, Suite 3rd Floor
- Mullica Hill, NJ 08062
- P: (856) 508-3706 | F: (856) 221-4211

Vineland

- Nauveed Iqbal, MD
- Mary Allison-Endicott, PA-C
- 1206 W. Sherman Avenue, Suite 2A
- Vineland, NJ 08360
- P: (856) 696-9933 | F: (856) 696-9939

Breast Surgery

Mullica Hill

- Nandini Kulkarni, MD
- 698 Mullica Hill Road, 3rd Floor
- Mullica Hill, NJ 08062
- P: (856) 641-8635 F: (856) 641-8636

Vineland

- Nandini Kulkarni, MD
- 1505 W. Sherman Avenue, Suite B
- Vineland, NJ 08360
- P: (856) 641-8635 | F: (856) 641-8636

General & Vascular Surgery

Mullica Hill

- Elaine Cheng, MD
- David J. Lynch, MD
- Timothy S. Pilla, MD
- 698 Mullica Hill Road, 3rd Floor
- Mullica Hill, NJ 08062
- P: (856) 508-3708 | F: (856) 221-4103

Sicklerville

- Elaine Cheng, MD
- 485 Williamstown-New Freedom Road,
- Sicklerville NJ 08081
- P: (856) 508-3708 | F: (856) 221-4103

General Surgery

Elmer

- John Patricelli, MD
- 525 S. State Street, Suite 6
- Elmer, NJ 08318
- P: (856) 363-1522 | F: (856) 363-1529

Podiatry

Mullica Hill

- Michael Flatley, DPM
- Ashley Fought, DPM
- 155 Bridgeton Pike, Suite B
- Mullica Hill, NJ 08062
- P: (856) 994-0004 | F: (856) 497-5133

Woolwich Township

- Michael Flatley, DPM
- Ashley Fought, DPM
- 40 Village Green Drive
- Woolwich Township, NJ 08085
- P: (856) 994-0004 | F: (856) 497-5133

Surgical Associates

Bridgeton

- Nauveed Iqbal, MD
- (General, Bariatric and Vascular Surgery)
- Mary Allison-Endicott, PA-C
- 10 Magnolia Avenue, Suite E
- Bridgeton, NJ 08302
- P: (856) 455-2399 | F: (856) 451-7791

Mullica Hill

- Leon Kushnir, MD
- (Endocrine and General Surgery)
- 155 Bridgeton Pike, Suite A
- Mullica Hill, NJ 08062
- P: (856) 696-9933 | F: (856) 696-9939

Vineland

- Charles Antinori, MD
- (General, Thoracic and Vascular Surgery)
- Gordon Callender, MD
- (General, Colon, and Rectal Surgery)
- Hsu-Tsai Amber Chi, MD
- (General Surgery)
- Holly Graves, MD
- (Vascular Surgery)
- Nauveed Iqbal, MD
- (General, Bariatric and Vascular Surgery)
- Sanjay Kumar, MD
- (Vascular and Endovascular)
- Leon Kushnir, MD
- (Endocrine and General Surgery)
- Lauren Aucott, PA
- Mary Allison-Endicott, PA-C
- Matthew Voit, PA-C
- 1206 W. Sherman Avenue, Suite 2A
- Vineland, NJ 08360
- P: (856) 696-9933 | F: (856) 696-9939

Neurosurgery

Mullica Hill

- 155 Bridgeton Pike
- Mullica Hill, NJ 08062
- P: (856) 507-0600 | F: (856) 507-0233

Vineland

- Richard Strauss, MD
- 2950 College Drive, Suite 1A
- Vineland, NJ 08360
- P: (856) 507-0600 | F: (856) 507-0233

Thoracic Surgery

Mullica Hill

- Charles Shieh, MD
- Mackenzie Groves, PA
- 698 Mullica Hill Road, Suite 3rd Floor
- Mullica Hill, NJ 08062
- P: (856) 508-3845 | F: (856) 221-4107

Vineland

- Charles Shieh, MD
- Mackenzie Groves, PA
- 1505 West Sherman Ave, Suite B
- Vineland, NJ 08360
- P: (856) 508-3845 | F: (856) 221-4107

Surgical Oncology

Mullica Hill

- Nandini Kulkarni, MD
- Peter Senatore, Jr., MD
- (Colon and Rectal Surgery)
- 698 Mullica Hill Road, 3rd Floor
- Mullica Hill, NJ 08062
- P: (856) 641-8635 | F: (856) 641-8636

Vineland

- Nandini Kulkarni, MD
- Peter Senatore, Jr., MD
- (Colon and Rectal Surgery)
- Gus J. Slotman, MD
- (Head and Neck Surgery)
- 1505 W. Sherman Avenue, Suite B
- Vineland, NJ 08360
- P: (856) 641-8635 | F: (856) 641-8636

Urgent Care

Glassboro

200 Rowan Boulevard
Glassboro, NJ 08028
P: (856) 582-1500 | F: (856) 218-9607

Laurel Springs

1238 Chews Landing Road
Clementon, NJ 08021
P: (856) 545-9500 | F: (856) 497-5214

Haddon Township

400 W. Cuthbert Boulevard
Westmont, NJ 08108
P: (856) 559-4300 | F: (856) 497-5204

Mantua

660 Woodbury-Glassboro Road, Suite 26
Sewell, NJ 08080
P: (856) 415-6188 | F: (856) 497-5150

Somerdale

1 South Whitehorse Pike
Somerdale, NJ 08083
P: (856) 545-9610 | F: (856) 575-5156

Tomlin Station

201 Tomlin Station Road
Mullica Hill, NJ 08062
P: (856) 241-2500 | F: (856) 497-5165

East Vineland

3722 E. Landis Ave, Suites I & J
Vineland, NJ 08361
P: (856) 213-5900 | F: (856) 213-5905

Vineland & Occupational Health

1297 W. Landis Avenue
Vineland, NJ 08360
P: (856) 507-8548 | F: (856) 507-2720

Washington Township

372 Egg Harbor Road, Suite 4A
Sewell, NJ 08080
P: (856) 218-5900 | F: (856) 497-5207

Williamstown

364 Berlin Cross Keys Road
Williamstown, NJ 08094
P: (856) 885-2600 | F: (856) 497-5297

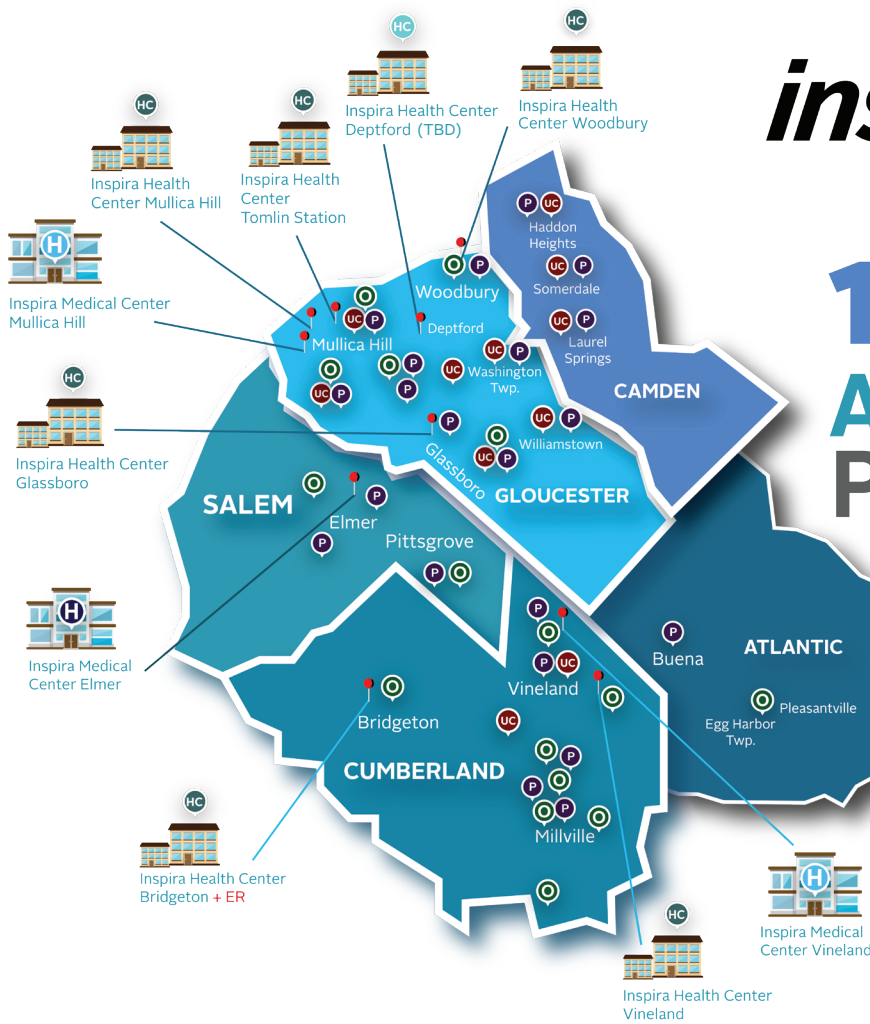
Woolwich

40 Village Green Drive
Woolwich Township, NJ 08085
P: (856) 542-1300 | F: (856) 497-5200



inspira HEALTH

150+ ACCESS POINTS



- H HOSPITAL
- UC URGENT CARE
- P PRIMARY & SPECIALTY CARE
- HC HEALTH CENTERS
- O PRIMARY & SPECIALTY CARE



inspira HEALTH MEDICAL GROUP