



# Doctors, Services & Locations

---

*inspira* HEALTH MEDICAL GROUP

# Primary Care

## Almonesson

- Linda Aquilino, DO
  - Nancy Koshy, DO
- 1652 Cooper Street  
Deptford, NJ 08096  
P: (856) 227-8611 | F: (856) 227-5716

## Buena Vista

- Douglas Hargrave, DO
  - Paul Peterson, DO
  - John Pirolli, DO
  - Mavola Tench, MD
- 761 S. Harding Highway  
Buena, NJ 08310  
P: (856) 697-0111 | F: (856) 697-0003

## Centerton

- Jay Malickel, DO
- 798 Centerton Road  
Pittsgrove, NJ 08318  
P: (856) 358-6161 | F: (856) 358-0142

## Clarksboro

- William Brennan, DO
  - Thomas McAndrew, MD
  - Erica Milas, DO
  - Kimberly McGuinness, APN
- 121 Berkley Road  
Clarksboro, NJ 08020  
P: (856) 284-6500 | F: (856) 497-5202

## Glassboro

- DUR-E-Shahwaar Sayed, DO
  - Steven Meskin, MD
  - Joseph B. Szgalsky, MD
  - Pinal Patel, PA
  - Courtney Turk, PA
- 200 Rowan Boulevard  
Glassboro, NJ 08028  
P: (856) 582-0500 | F: (856) 582-0163

## Haddon Township

- Victor Ukwu, MD
  - Sue Yang-Novellino, DO
- 400 W. Cuthbert Boulevard  
Haddon Twp., NJ 08108  
P: (856) 559-4277 | F: (856) 497-5204

## Laurel Springs

- Arthur Schultes, MD
- 1238 Chews Landing Road  
Clementon, NJ 08021  
P: (856) 545-9560 | F: (856) 497-5214

## Mantua

- Marjorie Affel, MD, MPH
  - Craig Bober, DO
  - Sarah Davis, MD
  - Barbara Roehl, MD
  - Suzanne VanDerwerken, MD
- 660 Woodbury-Glassboro Road, Suite 26  
Sewell, NJ 08080  
P: (856) 589-3708 | F: (856) 589-2662

## Millville

- Dave Aderholdt, DO
  - Rebecca Fraid, DO
  - Ashley Odukoya, DO
  - Nicole Zucconi, DO
  - Samantha Aderholdt, PA-C
- 3 Elizabeth Avenue  
Millville, NJ 08332  
P: (856) 641-6272 | F: (856) 327-6588

## Mullica Hill Commons

- Gregory E. Herman, MD
  - Maria Kent, MD
  - Bac Nguyen, MD
  - Kristen Trom, DO
  - Janeen Burns, APN
- 155 Bridgeton Pike, Suite A  
Mullica Hill, NJ 08062  
P: (856) 223-0500 | F: (856) 223-1098

## Sicklerville

- Ravi Desai, DO
  - Maynard Holgado, MD
  - Tara Wyche-Bullock, MD
- 485 Williamstown Road  
Sicklerville, NJ 08081  
P: (856) 237-8100 | F: (856) 237-8042

## Somerdale

- Jennifer Naticchia, MD
- 1 South Whitehorse Pike  
Somerdale, NJ 08083  
P: (856) 545-9620 | F: (856) 575-5156

## Tomlin Station

- Edward Pirolli, DO
  - Gregory Stiefel, DO
- 201 Tomlin Station Road, Suite D  
Mullica Hill, NJ 08062  
P: (856) 241-2522 | F: (856) 241-2511

## Washington Township

- Edward Pirolli, DO
- 372 Egg Harbor Road, Suite 4A  
Sewell, NJ 08080  
P: (856) 218-5899 | F: (856) 497-5207

## Williamstown

- Edward Pirolli, DO
- 364 Berlin Cross Keys Road  
Williamstown, NJ 08094  
P: (856) 885-2550 | F: (856) 497-5297

## Woolwich

- William Bennett, DO
  - Jason Lotkowski, DO
- 40 Village Green Drive,  
Woolwich Twp., NJ 08085  
P: (856) 467-7360 | F: (856) 467-5959

TEMPORARILY CLOSED

# Specialty Services

## Cardiology

- Enakshi Bajpai, DO
- M. Scott Dawson, MD
- Kurt W. Kaulback, MD
- Thomas F. Moccia, DO
- Farooq A. Padder, MD
- Ali Unwala, MD
- John A. Vergari, MD
- Kathleen M. Curtis, DNP, FNP, APN-C
- Miladys Delgado, APN-C
- Marcia Skowron-Scharle, APN-C

### **Mullica Hill**

698 Mullica Hill Road, Suite 330  
Mullica Hill, NJ 08062  
P: (856) 508-3707 | F: (856) 221-4077

### **Cardiovascular Diagnostic Center**

636 Kings Highway, Suite C  
Woodbury, NJ 08096  
P: (856) 845-9666 | F: (856) 845-5666

## Endocrinology

### **Mullica Hill**

- Jodi Fox-Mellul, MD
  - Amy Scanlon, APN
- 155 Bridgeton Pike, Suite B  
Mullica Hill, NJ 08062  
P: (856) 223-0965 | F: (856) 223-1044

### **Sicklerville**

- Jenine Vecchio, MD
- 485 Williamstown Road  
Sicklerville, NJ 08081  
P: (856) 885-2790 | F: (856) 237-8042

## Gastroenterology

### **Vineland**

- Jennifer Copare, DO
  - David Shields, MD
  - John Bartholomew, APN
  - Catherine Singiser, APN
- 2950 College Drive, Suite 2G  
Vineland, NJ 08360  
P: (856) 691-1129 | F: (856) 691-1229

## Medical Oncology

### **Mullica Hill**

- Erev Tubb, MD
  - Meghan Clark, APN
- 698 Mullica Hill Road, Suite 300  
Mullica Hill, NJ 08062  
P: (856) 508-3575 | F: (856) 221-4101

## Neurology

### **Mullica Hill**

- Susan Lotkowski, DO
- 155 Bridgeton Pike, Suite C  
Mullica Hill, NJ 08062  
P: (856)994-0005 | Fax: (856)221-4096

## Pulmonary

### **Woodbury**

- Gregory Breen, MD
  - Ho-Kan Cheng, MD
  - Eric Finkenstadt, MD
  - Theodore Plush, DO
  - Scott Rosenberg, MD
  - Amy Egan, APN
- 17 West Red Bank Avenue, Suite 104  
Woodbury, NJ 08096  
P: (856) 853-2025 | F: (856) 845-8024

### **Mullica Hill**

- Gregory Breen, MD
  - Ho-Kan Cheng, MD
  - Theodore Plush, DO
- 698 Mullica Hill Road, Suite 330  
Mullica Hill, NJ 08062  
P: (856) 853-2025 | F: (856) 845-8024

### **Vineland**

- Scott Rosenberg, MD
- 2950 College Drive, Suite 1A  
Vineland, NJ 08360  
P:(856) 853-2025 | F:(856) 845-8024

## Radiation Oncology

### **Mullica Hill**

- David Lowther, MD
- 698 Mullica Hill Road, Suite 110  
Mullica Hill, NJ 08062  
P: (856) 508-3550 | F: (856) 221-4198

# Women's Services

## Gentle Beginnings Midwifery

### **Elmer**

- Lindsay Dauphinee, CNM
  - Bernadette Lloyd-Sobolow, CNM
  - Waverly Lutz, CNM
  - Alexandra Wagner, CNM
- 389 Harding Highway, Suite 1  
Elmer, NJ 08318  
P: (856) 358-1100 | F: (856) 358-3135

### **Haddon Heights**

- Lindsay Dauphinee, CNM
  - Bernadette Lloyd-Sobolow, CNM
  - Alexandra Wagner, CNM
- 708 Station Avenue  
Haddon Heights, NJ 08035  
P: (856) 265-0200 | F: (856) 547-3531

## Urogynecology

### **Mullica Hill**

- Woojin Chong, MD
- 155 Bridgeton Pike, Suite C  
Mullica Hill, NJ 08062

### **Vineland**

- Woojin Chong, MD
- 2950 College Drive, Suite 2A  
Vineland, NJ 08360  
P: (856) 641-8680 | F: (856) 641-8679

## Maternal/Fetal Medicine

### **Vineland**

- Robert Debbs, DO
  - Cara Dolan, MD
  - Paula Edelson, MD
  - Samuel I. Parry, MD
  - Haley Quant, MD
  - Jourdan Triebwasser, MD
- 1505 W. Sherman Avenue  
Vineland, NJ 08360  
P: (856) 641-7960 | F: (856) 641-7645

### **Mullica Hill**

- Robert Debbs, DO
  - Dominic Marchiano, MD
  - Eileen Wang, MD
- 698 Mullica Hill Road, Suite 240  
Mullica Hill, NJ 08062  
P: (856) 686-5088 | F: (856) 853-2137

## Obstetrics and Gynecology

### **East Vineland**

- Neely Elisha, DO
  - Sabrina Thomas, MD
- 2466 East Chestnut Ave, Bldg 2  
Vineland, NJ 08360  
P: (856) 213-9500 | F: (856) 221-4099

### **Elmer**

- Michael Geria, DO
  - Cathy Geria, APN-C
- 525 S. State Street, Suite 5  
Elmer, NJ 08318  
P: (856) 363-1210 | F: (856) 363-1211

### **Laurel Springs**

- Melissa Suarez, DO
- 1238 Chews Landing Road  
Clementon, NJ 08021  
P: (856) 845-4061 | F: (856) 384-1770

### **Mullica Hill**

- Veronika Kinashuk, MD
  - Samantha DeLuca, DO
  - Azieb Lofton, DO
  - Melissa Suarez, DO
  - Patricia Ragone, CNM
  - Susan Gominger, APN-C
  - Caryn Vance, APN-C
- 698 Mullica Hill Road, Suite 220  
Mullica Hill, NJ 08062  
P: (856) 845-4061 | F: (856) 384-1770

### **Vineland**

- Benjamin DiJoseph, Jr., DO
  - Neely Elisha, DO
  - Michael Geria, DO
  - Sabrina Thomas, MD
- 2950 College Drive, Suite 2D  
Vineland, NJ 08360  
P: (856) 641-6313 | F: (856) 497-5350

### **Washington Township**

- Samantha DeLuca, DO
- 372 Egg Harbor Road, Suite 4A  
Sewell, NJ 08080  
P: (856) 845-4061 | F: (856) 384-1170

### **West Deptford**

- Veronika Kinashuk, MD
  - Samantha DeLuca, DO
  - Azieb Lofton, DO
  - Melissa Suarez, DO
  - Patricia Ragone, CNM
  - Susan Gominger, APN-C
  - Caryn Vance, APN-C
- 800 Jessup Road, Suite 809  
West Deptford, NJ 08066  
P: (856) 845-4061 | F: (856) 384-1770

# Surgical Services

## Bariatric Surgery

### **Bridgeton**

- Nauveed Iqbal, MD
- Mary Allison-Endicott, PA-C
- 10 Magnolia Avenue, Suite E
- Bridgeton, NJ 08302
- P: (856) 455-2399 | F: (856) 451-7791

### **Mullica Hill**

- Keith Kreitz, MD
- 698 Mullica Hill Road, Suite 320
- Mullica Hill, NJ 08062
- P: (856) 508-3706 | F: (856) 221-4211

### **Vineland**

- Nauveed Iqbal, MD
- Mary Allison-Endicott, PA-C
- 1206 W. Sherman Avenue, Suite 2A
- Vineland, NJ 08360
- P: (856) 696-9933 | F: (856) 696-9939

## Breast Surgery

### **Mullica Hill**

- Nandini Kulkarni, MD
- Bliss Usher, NP
- 698 Mullica Hill Road, Suite 300
- Mullica Hill, NJ 08062
- P: (856) 641-8635 F: (856) 641-8636

### **Vineland**

- Nandini Kulkarni, MD
- Bliss Usher, NP
- 1505 W. Sherman Avenue, Suite B
- Vineland, NJ 08360
- P: (856) 641-8635 | F: (856) 641-8636

## General & Vascular Surgery

### **Mullica Hill**

- Elaine Cheng, MD
- David J. Lynch, MD
- Timothy S. Pilla, MD
- 698 Mullica Hill Road, Suite 320
- Mullica Hill, NJ 08062
- P: (856) 508-3708 | F: (856) 221-4103

### **Sicklerville**

- Elaine Cheng, MD
- 485 Williamstown-New Freedom Road,
- Sicklerville NJ 08081
- P: (856) 508-3708 | F: (856) 221-4103

## General Surgery

### **Elmer**

- John Patricelli, MD
- 525 S. State Street, Suite 6
- Elmer, NJ 08318
- P: (856) 363-1522 | F: (856) 363-1529

## Podiatry

### **Mullica Hill**

- Michael Flatley, DPM
- Ashley Fought, DPM
- 155 Bridgeton Pike, Suite B
- Mullica Hill, NJ 08062
- P: (856) 994-0004 | F: (856) 497-5133

### **Woolwich Township**

- Michael Flatley, DPM
- Ashley Fought, DPM
- 100 Lexington Road, Building 100
- Woolwich Township, NJ 08085
- P: (856) 994-0004 | F: (856) 497-5133

## Surgical Associates

### **Bridgeton**

- Nauveed Iqbal, MD
- (General, Bariatric and Vascular Surgery)
- Mary Allison-Endicott, PA-C
- 10 Magnolia Avenue, Suite E
- Bridgeton, NJ 08302
- P: (856) 455-2399 | F: (856) 451-7791

### **Mullica Hill**

- Leon Kushnir, MD
- (Endocrine and General Surgery)
- 155 Bridgeton Pike, Suite A
- Mullica Hill, NJ 08062
- P: (856) 696-9933 | F: (856) 696-9939

### **Vineland**

- Charles Antinori, MD
- (General, Thoracic and Vascular Surgery)
- Gordon Callender, MD
- (General, Colon, and Rectal Surgery)
- Hsu-Tsai Amber Chi, MD
- (General Surgery)
- Holly Graves, MD
- (Vascular Surgery)
- Nauveed Iqbal, MD
- (General, Bariatric and Vascular Surgery)
- Sanjay Kumar, MD
- (Vascular and Endovascular)
- Leon Kushnir, MD
- (Endocrine and General Surgery)
- Mary Allison-Endicott, PA-C
- Matthew Voit, PA-C
- 1206 W. Sherman Avenue, Suite 2A
- Vineland, NJ 08360
- P: (856) 696-9933 | F: (856) 696-9939

## Neurosurgery

### **Mullica Hill**

- 155 Bridgeton Pike
- Mullica Hill, NJ 08062
- P: (856) 507-0600 | F: (856) 507-0233

### **Vineland**

- Richard Strauss, MD
- 2950 College Drive, Suite 1A
- Vineland, NJ 08360
- P: (856) 507-0600 | F: (856) 507-0233

## Thoracic Surgery

### **Mullica Hill**

- Charles Shieh, MD
- Mackenzie Groves, PA
- 698 Mullica Hill Road, Suite 300
- Mullica Hill, NJ 08062
- P: (856) 508-3845 | F: (856) 221-4107

### **Vineland**

- Charles Shieh, MD
- Mackenzie Groves, PA
- 1505 West Sherman Ave, Suite B
- Vineland, NJ 08360
- P: (856) 508-3845 | F: (856) 221-4107

## Surgical Oncology

### **Mullica Hill**

- Nandini Kulkarni, MD
- Peter Senatore, Jr., MD
- (Colon and Rectal Surgery)
- 698 Mullica Hill Road, Suite 310
- Mullica Hill, NJ 08062
- P: (856) 641-8635 | F: (856) 641-8636

### **Vineland**

- Nandini Kulkarni, MD
- Peter Senatore, Jr., MD
- (Colon and Rectal Surgery)
- Gus J. Slotman, MD
- (Head and Neck Surgery)
- 1505 W. Sherman Avenue, Suite B
- Vineland, NJ 08360
- P: (856) 641-8635 | F: (856) 641-8636

# Urgent Care

## Glassboro

200 Rowan Boulevard  
Glassboro, NJ 08028  
P: (856) 582-1500 | F: (856) 218-9607

## Haddon Township

400 W. Cuthbert Boulevard  
Westmont, NJ 08108  
P: (856) 559-4300 | F: (856) 497-5204

## Laurel Springs

1238 Chews Landing Road  
Clementon, NJ 08021  
P: (856) 545-9500 | F: (856) 497-5214

## Mantua

660 Woodbury-Glassboro Road, Suite 26  
Sewell, NJ 08080  
P: (856) 415-6188 | F: (856) 497-5150

## Somerdale

1 South Whitehorse Pike  
Somerdale, NJ 08083  
P: (856) 545-9610 | F: (856) 575-5156

## Tomlin Station

201 Tomlin Station Road  
Mullica Hill, NJ 08062  
P: (856) 241-2500 | F: (856) 497-5165

## East Vineland

3722 E. Landis Ave, Suites I & J  
Vineland, NJ 08361  
P: (856) 213-5900 | F: (856) 213-5905

## Vineland & Occupational Health

1297 W. Landis Avenue  
Vineland, NJ 08360  
P: (856) 507-8548 | F: (856) 507-2720

## Washington Township

372 Egg Harbor Road, Suite 4A  
Sewell, NJ 08080  
P: (856) 218-5900 | F: (856) 497-5207

## Williamstown

364 Berlin Cross Keys Road  
Williamstown, NJ 08094  
P: (856) 885-2600 | F: (856) 497-5297

## Woolwich

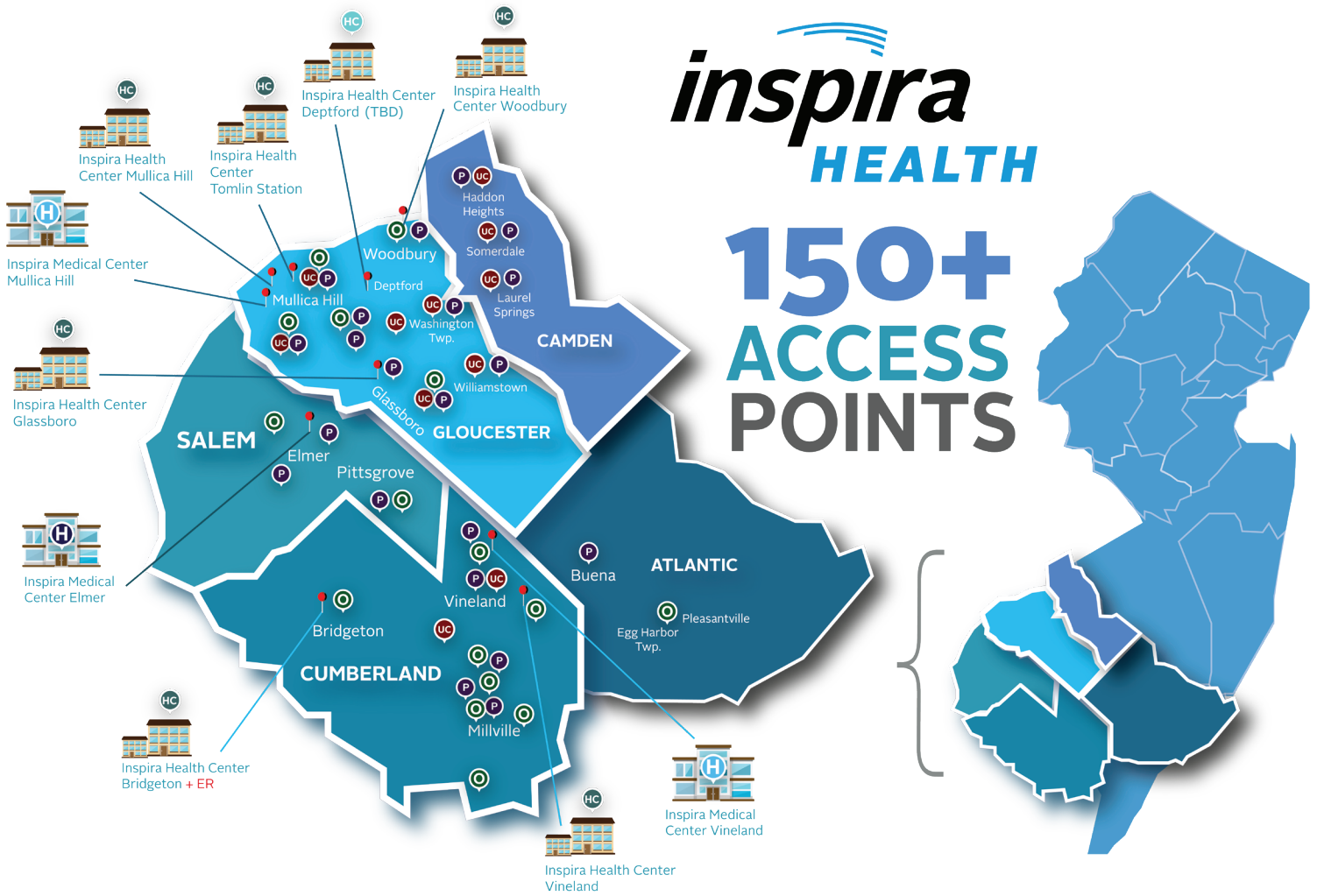
101 Lexington Road, Suite 530  
Woolwich Township, NJ 08085  
P: (856) 542-1300 | F: (856) 497-5200

TEMPORARILY CLOSED





150+  
ACCESS  
POINTS



## INTRODUCING

# Inspira Medical Group Post-Acute Care

Over 20 providers serving patients in Nursing and Sub-Acute Care facilities in your community!

The page features several thick, blue, curved lines that sweep across the bottom half of the page, creating a sense of motion and modern design.

***inspira*** HEALTH MEDICAL GROUP